



MONTHLY MEMBERSHIP PROGRESS REPORT

District 43 C

Results as of: 01/31/2018

GMT: STEVE ANTON

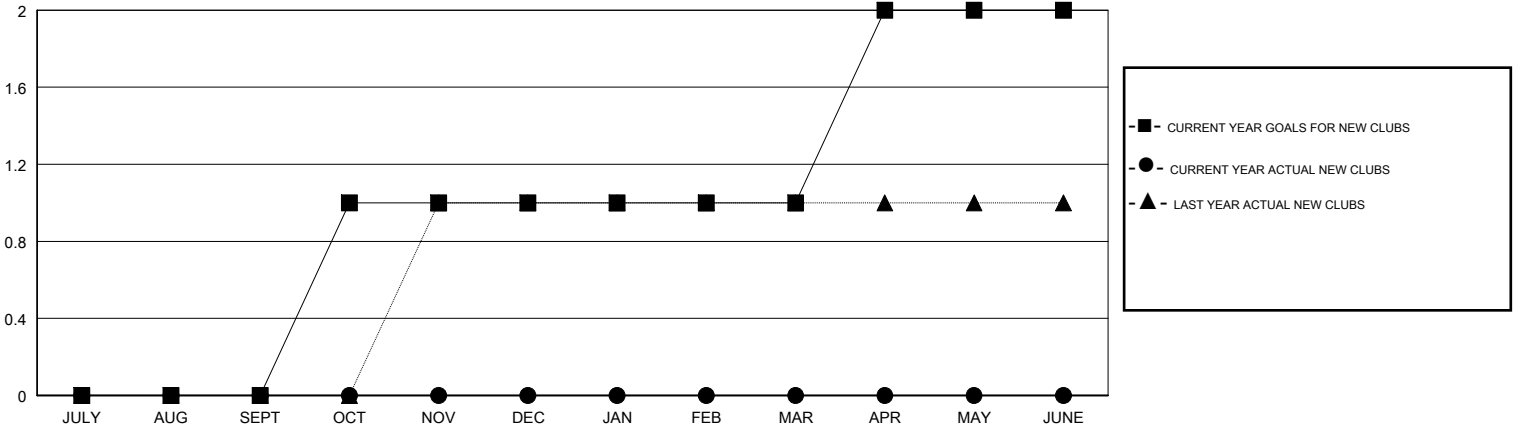
LOCATION KENTUCKY

GMT CA

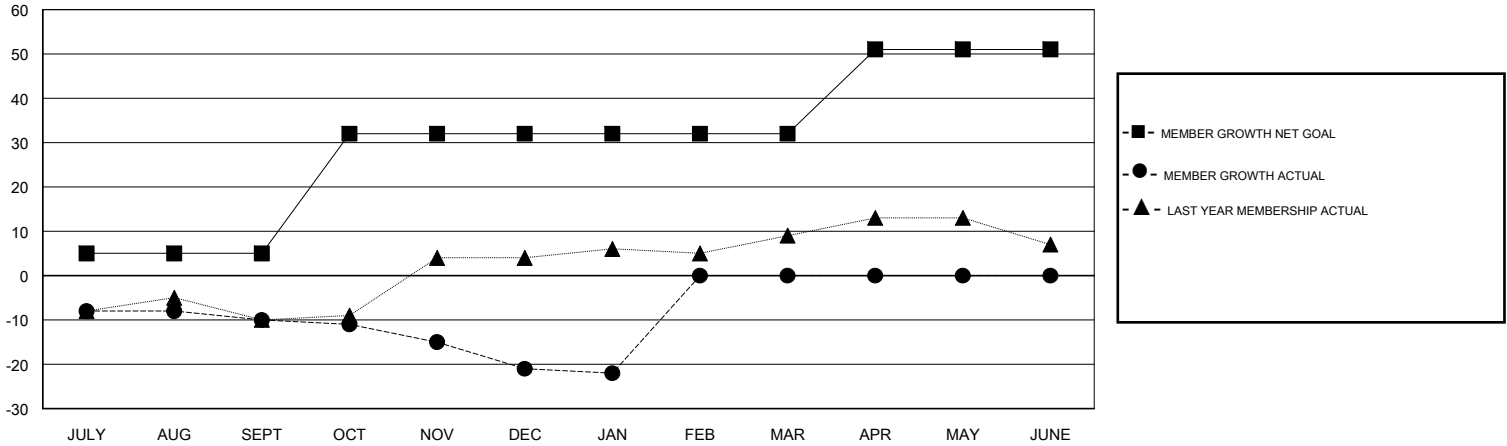
Clubs			
RESULTS FOR 2017-2018			
QUARTER	NEW CLUB GOAL	NEW CLUBS	DROPPED CLUBS
JULY/AUG/SEPT	0	0	0
OCT/NOV/DEC	1	0	0
JAN/FEB/MAR	0	0	0
APR/MAY/JUNE	1	0	0

Members			
RESULTS FOR 2017-2018			
QUARTER	MEMBER GROWTH NET GOAL	MEMBER GROWTH ACTUAL	DROPPED MEMBERS ACTUAL (including transfers)
JULY/AUG/SEPT	5	6	16
OCT/NOV/DEC	27	6	16
JAN/FEB/MAR	0	1	2
APR/MAY/JUNE	19	0	0

GOALS AND ACTUAL NEW CLUBS CUMULATIVE



GOALS AND ACTUAL MEMBERS CUMULATIVE



DROPPED CLUBS: 0	6 CLUBS OF 26 ADDED 1 OR MORE NEW MEMBERS	<u>GENDER DISTRIBUTION</u> MALE 388 (62.68%) FEMALE 231 (37.32%) Women Percentage Fiscal Year Goal: 40%
<u>DROPPED MEMBERS</u> DECEASED 6 CLUB CANCELLED 0 OTHER 28 TOTAL 34	CLICK HERE FOR CUMULATIVE MEMBERSHIP DATA	TOTAL FAMILY UNIT MEMBERS 183 FAMILY MEMBERS PAYING HALF DUES 96